



#### FEATURES

- Investment Cast Body Construction
- 2 Pieces Body Design
- ISO 5211 Mounting Flange
- Blow-Out-Proof Stem Design
- Anti-Static Device
- Available for Pneumatic or Electric Actuator
- NACE MR0175 is available upon request

AUTOMATION  
AVAILABLE

#### SPECIFICATIONS

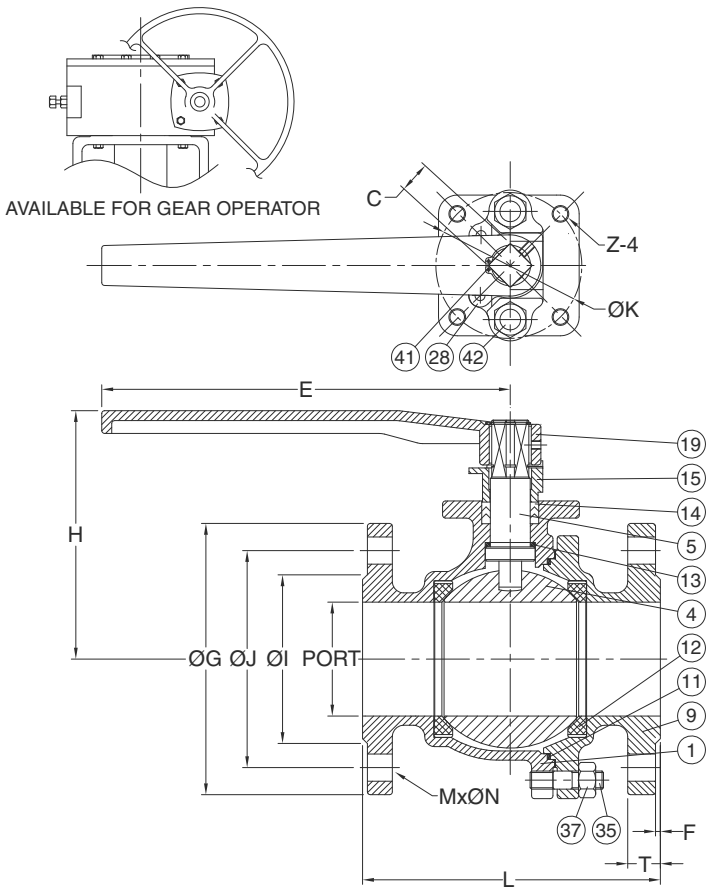
- Size Range 1/2" ~ 14" ( DN15 ~ DN350 )
- End Connection Flanged End, RF
- Working Pressure SCS14A - 10K at RT  
SCPH2 - 10K at RT
- Steam Pressure 150 PSIG. Saturated Steam for RTFE.
- Temperature Range -4 to 356 °F ( -20 to 180 °C ) for RTFE.

#### STANDARDS

- Design ASME/ANSI B16.34
- Mounting Flange ISO 5211
- Face to Face JIS B2002
- Flange Dimension JIS B2236
- Material JIS G5151
- Pressure Testing API 598

#### CERTIFICATE

- Quality Assurance ISO 9001
- Material Certificate EN 10204-3.1 MTR
- CE Approval PED 97/23/EC Module H



#### MATERIAL LIST

NO.	PART NAME	MATERIAL ( more options available )	
1	BODY	JIS G5151 SCS14A	JIS G5151 SCPH2
4	BALL	ASTM A351 Gr.CF8	
5	STEM	ASTM A276 Gr.SS304	
9	END CAP	JIS G5151 SCS14A	JIS G5151 SCPH2
11	BODY SEAL	PTFE.	
12	SEAT	RTFE.(15%G.F.)	
13	THRUST WASHER	PTFE.	
14	STEM PACKING	PTFE.	
15	GLAND	SS304	
19	HANDLE	CAST IRON	
28	STOP PLATE	SS304	
35	BODY BOLT	SS304	
37	BODY BOLT NUT	SS304	
41	SNAP RING	SS304	
42	GLAND BOLT	SS304	

#### DIMENSION

															unit : mm		
SIZE	PORT	L	E	H	C	ØG	ØJ	ØI	T	F	MxØN	ØK	Z				
DN15	1/2"	15.0	110	152	85	12	95	70	52	12	1	4x15	42/F04	M5			
DN20	3/4"	20.0	120	152	90	12	100	79	58	14	1	4x15	42/F04	M5			
DN25	1"	25.0	130	152	100	12	125	90	70	14	1	4x19	42/F04	M5			
DN32	1-1/4"	32.0	140	152	105	12	135	100	80	16	2	4x19	50/F05	M6			
DN40	1-1/2"	40.0	165	200	110	17	140	105	85	16	2	4x19	70/F07	M8			
DN50	2"	50.0	180	200	120	17	155	120	100	16	2	4x19	70/F07	M8			
DN65	2-1/2"	65.0	190	300	150	21	175	140	120	18	2	4x19	70/F07	M8			
DN80	3"	80.0	200	300	170	21	185	150	130	18	2	8x19	102/F10	M10			

#### DIMENSION

															unit : inch		
SIZE	PORT	L	E	H	C	ØG	ØJ	ØI	T	F	MxØN	ØK	Z				
DN15	1/2"	0.59	4.33	5.98	3.35	0.47	3.74	2.76	2.05	0.47	0.04	4x0.59	1.65/F04	M5			
DN20	3/4"	0.79	4.72	5.98	3.54	0.47	3.94	3.11	2.28	0.55	0.04	4x0.59	1.65/F04	M5			
DN25	1"	0.98	5.12	5.98	3.94	0.47	4.92	3.54	2.76	0.55	0.04	4x0.75	1.65/F04	M5			
DN32	1-1/4"	1.26	5.51	5.98	4.13	0.47	5.31	3.94	3.15	0.63	0.08	4x0.75	1.97/F05	M6			
DN40	1-1/2"	1.57	6.50	7.87	4.33	0.67	5.51	4.13	3.35	0.63	0.08	4x0.75	2.76/F07	M8			
DN50	2"	1.97	7.09	7.87	4.72	0.67	6.10	4.72	3.94	0.63	0.08	4x0.75	2.76/F07	M8			
DN65	2-1/2"	2.56	7.48	11.81	5.91	0.83	6.89	5.51	4.72	0.71	0.08	4x0.75	2.76/F07	M8			
DN80	3"	3.15	7.87	11.81	6.69	0.83	7.28	5.91	5.12	0.71	0.08	8x0.75	4.02/F10	M10			



### FEATURES

- Investment Cast Body Construction
- 2 Pieces Body Design
- ISO 5211 Mounting Flange
- Blow-Out-Proof Stem Design
- Anti-Static Device
- Available for Pneumatic or Electric Actuator
- NACE MR0175 is available upon request

**AUTOMATION AVAILABLE**

### SPECIFICATIONS

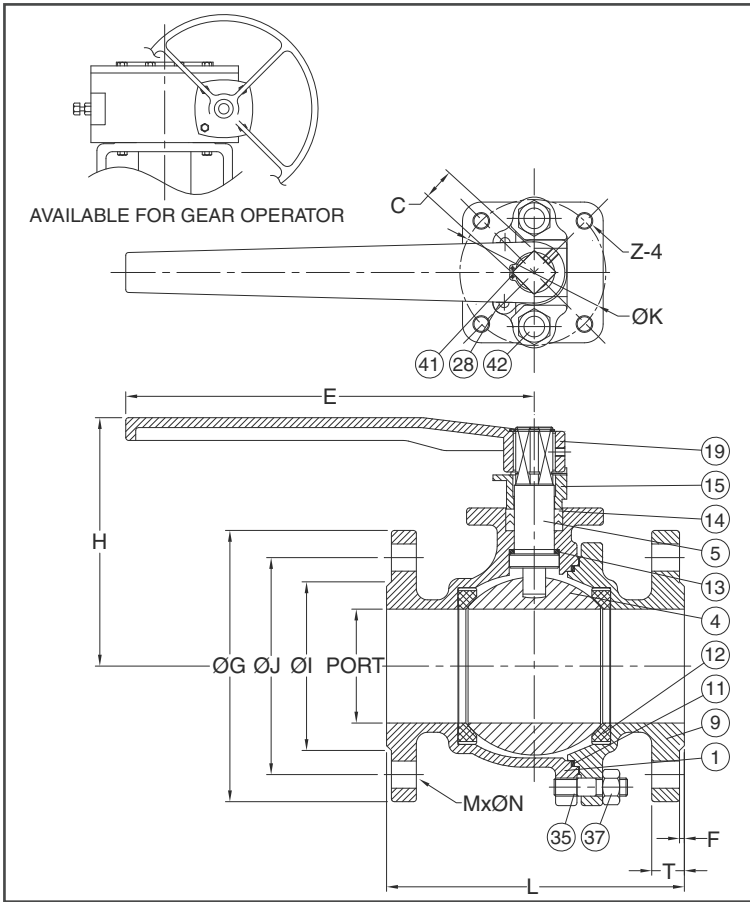
- Size Range 1/2" ~ 14" ( DN15 ~ DN350 )
- End Connection Flanged End, RF
- Working Pressure SCS14A - 10K at RT  
SCPH2 - 10K at RT
- Steam Pressure 150 PSIG. Saturated Steam for RTFE.
- Temperature Range -4 to 356 °F ( -20 to 180 °C ) for RTFE.

### STANDARDS

- Design ASME/ANSI B16.34
- Mounting Flange ISO 5211
- Face to Face JIS B2002
- Flange Dimension JIS B2236
- Material JIS G5151
- Pressure Testing API 598

### CERTIFICATE

- Quality Assurance ISO 9001
- Material Certificate EN 10204-3.1 MTR
- CE Approval PED 97/23/EC Module H



MATERIAL LIST				DIMENSION													unit : mm		
NO.	PART NAME	MATERIAL ( more options available )		SIZE	PORT	L	E	H	C	ØG	ØJ	ØI	T	F	MxØN	ØK	Z		
		1	BODY	JIS G5151 SCS14A	JIS G5151 SCPH2	DN100	4"	100	230	300	180	210	175	155	18	2	8x19	102/F10	M10
4	BALL	ASTM A351 Gr.CF8		DN125	5"	125	300	515	260	24	250	210	185	20	2	8x23	102/F10	M10	
5	STEM	ASTM A276 Gr.SS304		DN150	6"	150	340	515	280	24	280	240	215	22	2	8x23	102/F10	M10	
9	END CAP	JIS G5151 SCS14A	JIS G5151 SCPH2	DN200	8"	200	450	785	340	32	330	290	265	22	2	12x23	125/F12	M12	
11	BODY SEAL	PTFE.		DN250	10"	250	530	785	400	32	400	355	325	24	2	12x25	140/F14	M16	
12	SEAT	RTFE.(15%G.F.)		DN300	12"	300	610	GEAR	GEAR	32	445	400	370	24	3	16x25	140/F14	M16	
13	THRUST WASHER	PTFE.		DN350	14"	350	686	GEAR	GEAR	50	490	445	415	26	3	16x25	165/F16	M20	
14	STEM PACKING	PTFE.		DIMENSION													unit : inch		
15	GLAND	SS304		SIZE	PORT	L	E	H	C	ØG	ØJ	ØI	T	F	MxØN	ØK	Z		
19	HANDLE	CAST IRON		DN100	4"	3.94	9.06	11.81	7.09	0.83	8.27	6.89	6.10	0.71	0.08	8x0.75	4.02/F10	M10	
28	STOP PLATE	SS304		DN125	5"	4.92	11.81	20.28	10.24	0.94	9.84	8.27	7.28	0.79	0.08	8x0.91	4.02/F10	M10	
35	BODY BOLT	SS304		DN150	6"	5.91	13.39	20.28	11.02	0.94	11.02	9.45	8.46	0.87	0.08	8x0.91	4.02/F10	M10	
37	BODY BOLT NUT	SS304		DN200	8"	7.87	17.72	30.91	13.39	1.26	12.99	11.42	10.43	0.87	0.08	12x0.91	4.92/F12	M12	
41	SNAP RING	SS304		DN250	10"	9.84	20.87	30.91	15.75	1.26	15.75	13.98	12.80	0.94	0.08	12x0.98	5.51/F14	M16	
42	GLAND BOLT	SS304		DN300	12"	11.81	24.02	GEAR	GEAR	1.26	17.52	15.75	14.57	0.94	0.12	16x0.98	5.51/F14	M16	
				DN350	14"	13.78	27.01	GEAR	GEAR	1.97	19.29	17.52	16.34	1.02	0.12	16x0.98	6.50/F16	M20	